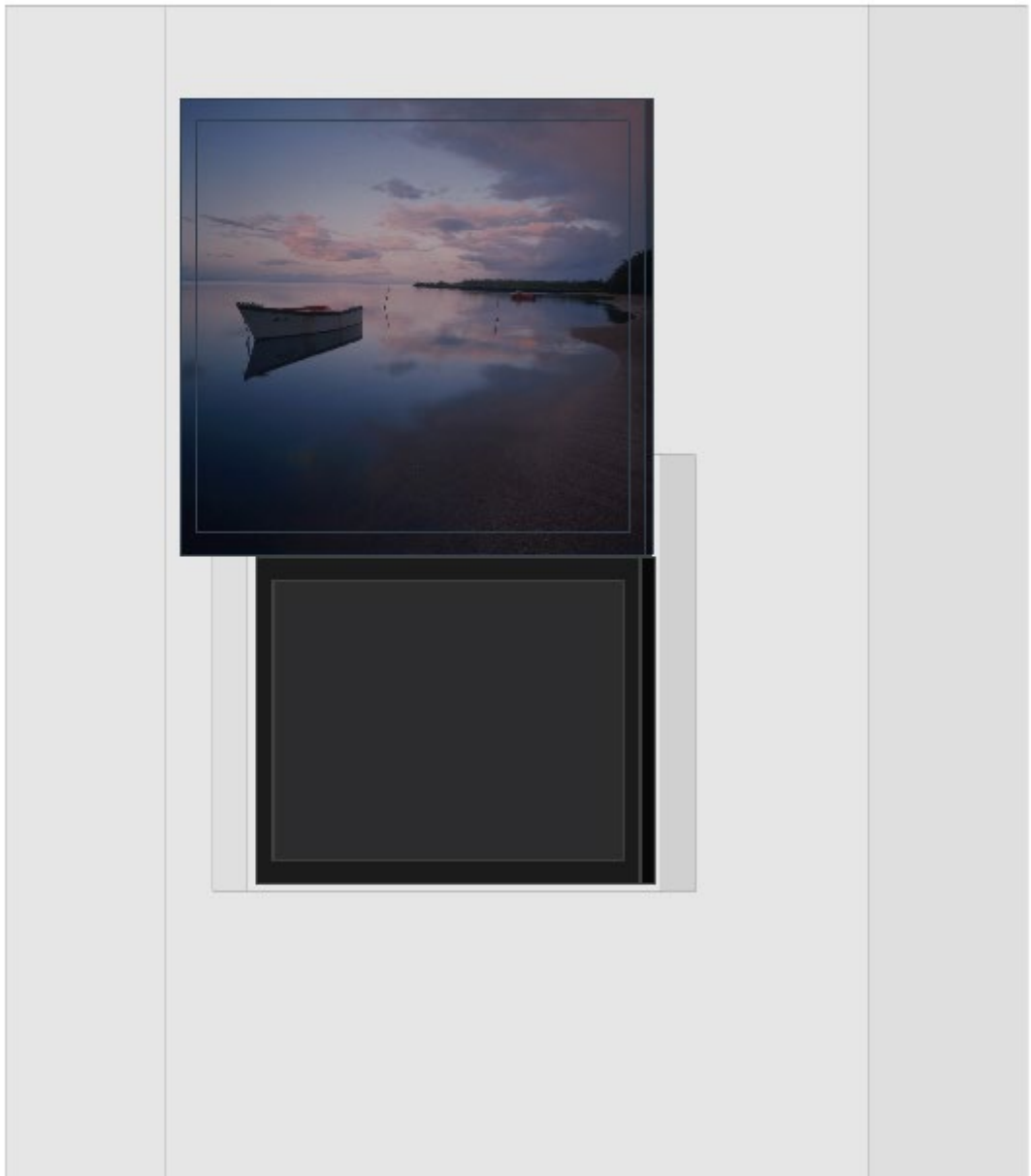


AWL Art work lift



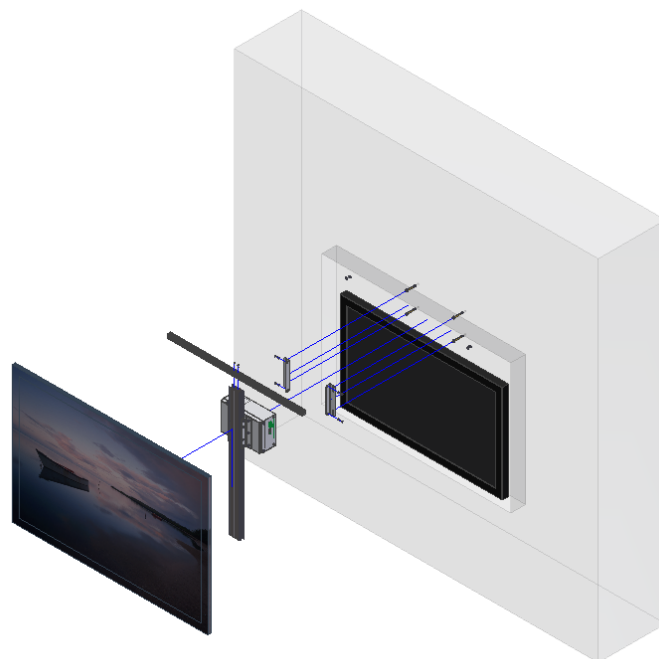
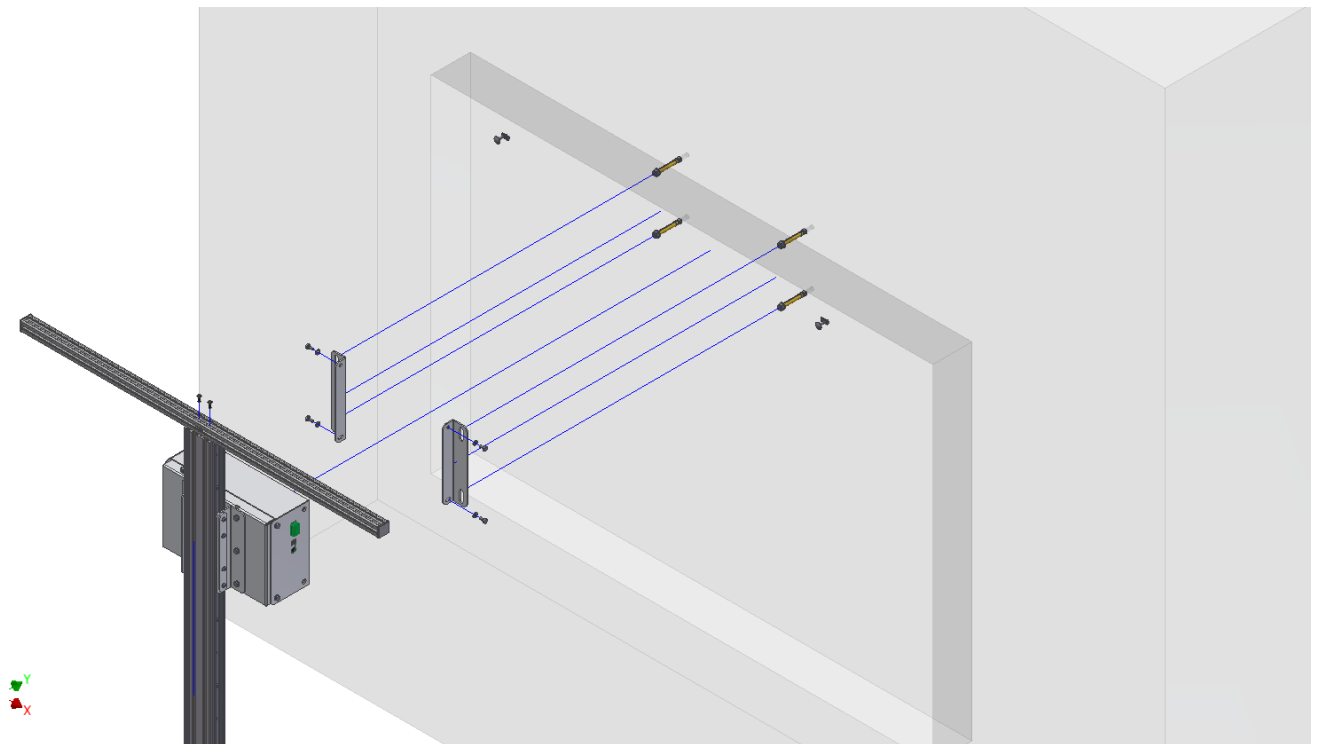
1.

Install the AWL lift in the wall above the screen.

Be sure that the art work it self is the same height as the total front of the lifting frame of the AWL lift.

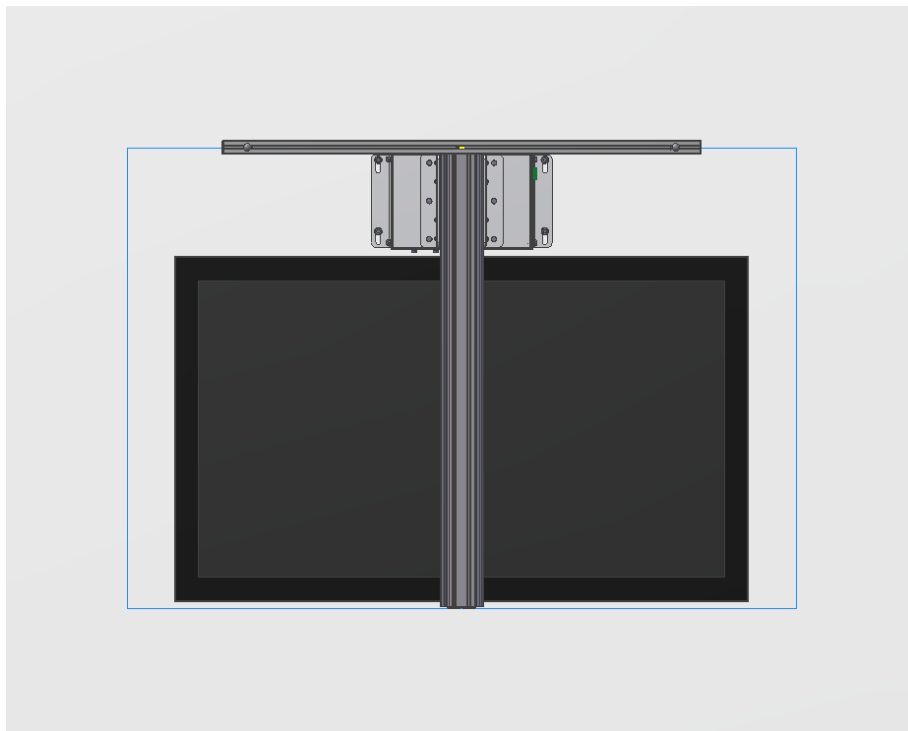
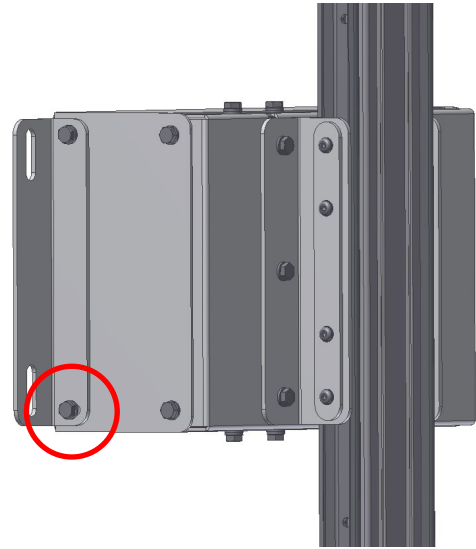
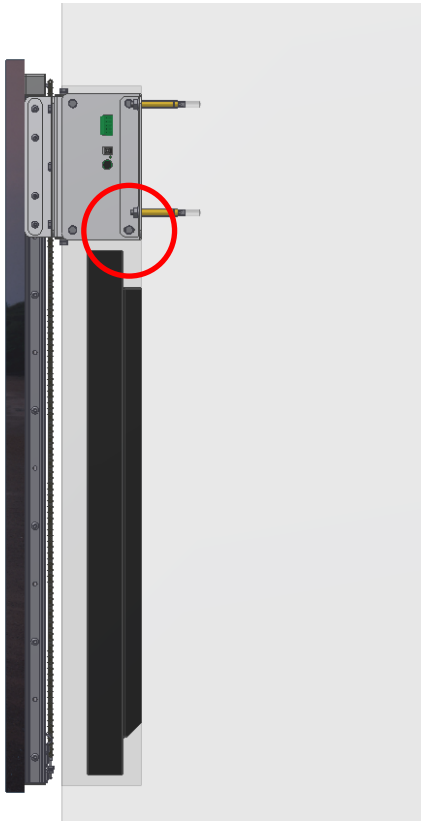
(gries are to adapt the art work or order a custom build model AWL)

Always install to a straight and level wall



2.

Install the AWL lift using all screws in the wall possible.
By loosening the bottom screw it is possible to slightly pivot the unit.
Fasten all bolts well.

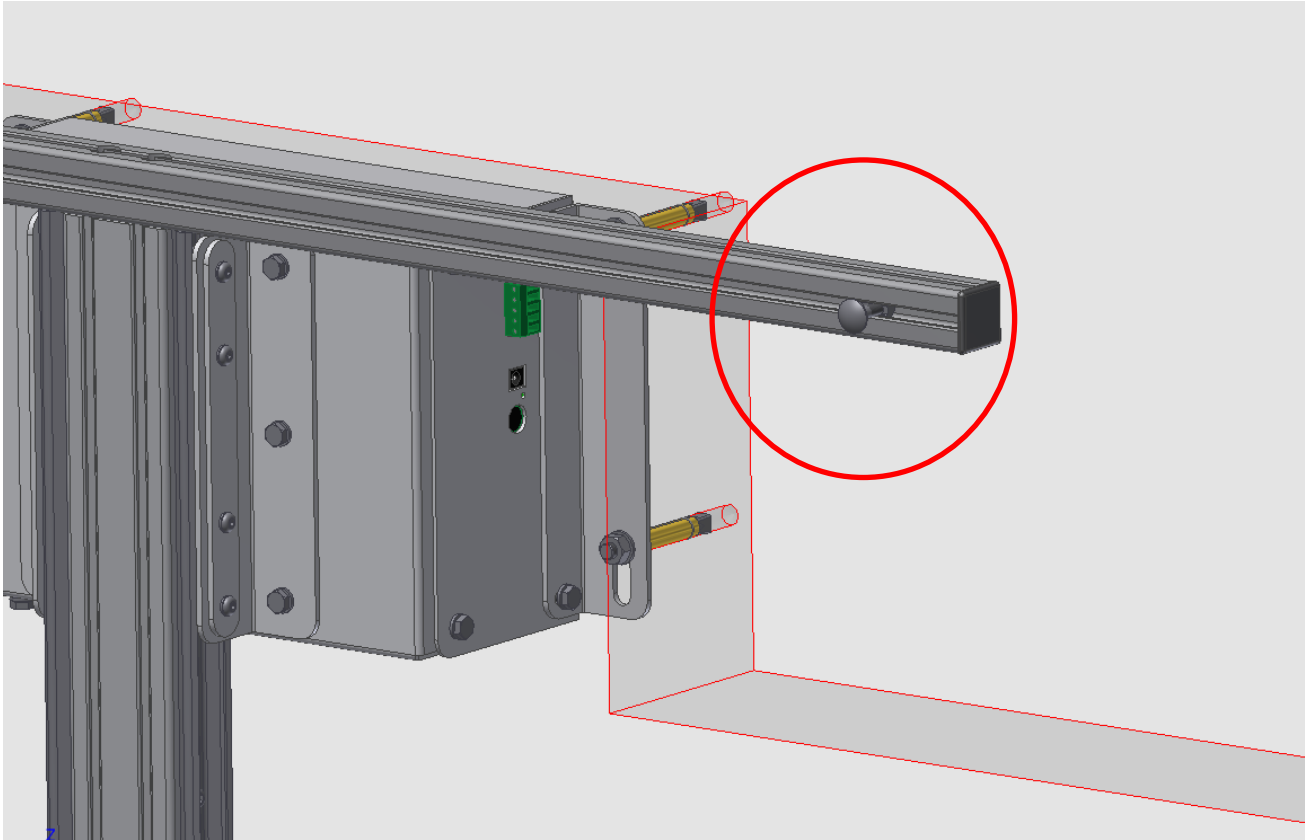


3.

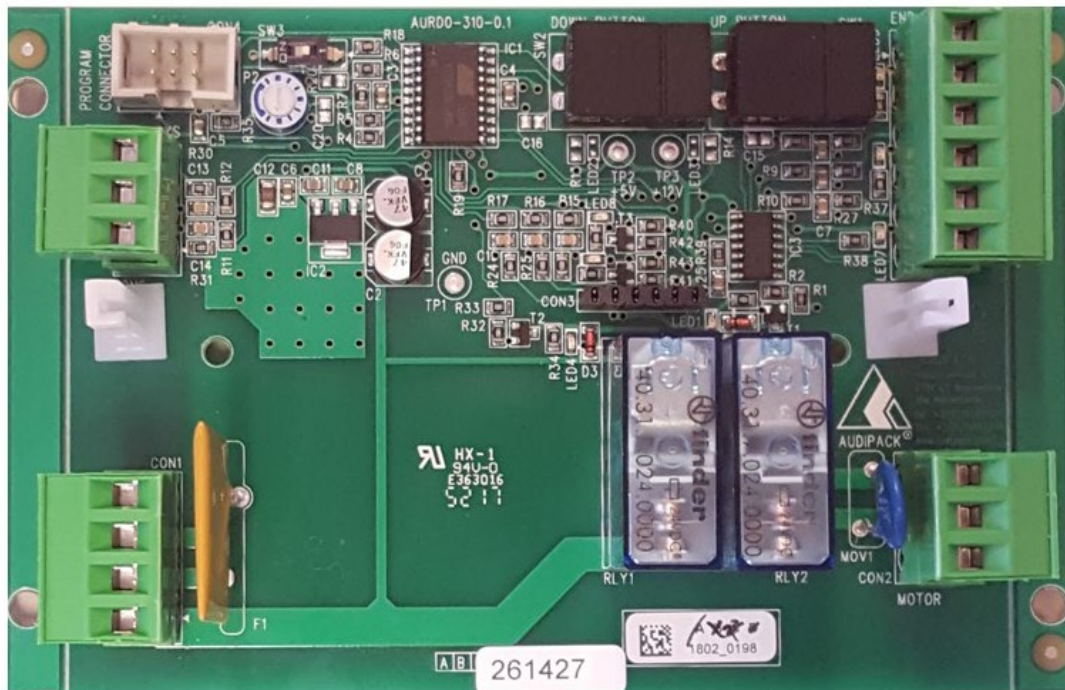
For installing the art work to the system nuts and bolts can be positioned in the T-slot of the aluminium profile.

Position them anywhere needed and tighten them well.

Optional special custom brackets are available to install special art work frames.



4. Connections



Common Information

Note:

Your Audipack product is equipped with a DC 24 volt control as below. This control has been designed to control an external product suitable for controlling by contact closures.

This type of control is also available as a set inclusive a IR remote set part no. 260218 or as an RF remote control set part no. 260219. Refer to the manual of the IR and RF module for connecting and programming.

Cautions:

The relay control is not suited to high revving motors

Do never overload the relay control

The relay control should always be mounted inside an appropriate housing

The wiring which is connected to the relay control has to be wrapped by a tie-rape

The relay control may only be plugged to a grounded power-point

Properties:

The motor needs to be braked before switching the direction

It is possible to have the motor run for a pre-set time (impulse push).

It is possible to connect a safety relay to the control print (i.e. for an emergency button). The connector is suited only to an external standardized relay.

If the relay control is mounted in machines used within the reach of bystanders, or over bystanders, the following safety guidelines have to be observed.

Installation and connections may only be carried out by qualified staff

The power cable must be conform (3x1 mm²) EN60227

Warning

A.

While the machine is in motion, the operator should have full sight over the machine

B.

The control buttons have to be installed in a place which offers the operator full sight over the machine

C.

No bystanders may stand under the machine, or within the radius of the machine, if the lowest point of the machine is less than 2 meters above the floor.

D.

If the machine shows up damage during testing or normal operation, the machine should be taken out of service. The machine should be repaired by a qualified installer. The machine should be released by a qualified installer.

E.

If the machine is damaged or fractured, the operator should have the machine repaired by a qualified installer or by Audipack.

Connections and settings

Description connectors

Connector 1:
Main current connector 24 DC

Pin 1:	safety relay (potential free)
Pin 2:	safety relay (potential free)
Pin 3:	+ 24 DC connection
Pin 4:	- 24 DC connection

Connector 2:
DC motor connection

Pin 1:	-
Pin 2:	Motor -
Pin 3:	Motor +

Connector 3:
Optional IR/RF PCB connector

Connector 4:
Programming connector

Connector 5:
All below connections are potential free contacts

Pin 1:	over service position switch (not for all products)
Pin 2:	GND
Pin 3:	end switch UP
Pin 4:	GND
Pin 5:	end switch DOWN
Pin 6:	GND

Connector 6:
All below connections are potential free contacts

Pin 1:	external control DOWN
Pin 2:	GND
Pin 3:	external control UP

SW3:
Print switch impulse push

1 = OFF
ON = ON

Impulse push

It is possible to activate the external system for a preset time.

Before the impulse push can be activated, the dip/switch on the print has to be activated. The running time can be preset with the potentiometer on the print. Use exactly fitting tools to set the running time. Turn the potentiometer to the right to increase the running time (maximally 240 seconds).

External safety relay or emergency button connection

If a safety relay or emergency button is required, this can be connected to position 1 and 2 of connector 1. The connection loop has to be removed before using this connection.

Technical specifications

PCB:

24 Volt DC 10A

The power cable must be conform (3x1 mm²) EN60227

Binding the wiring together

All wiring must be wrapped together by a tie-rap to prevent the wiring from falling out of the connector. The tie-rap will always keep the loose thirds in the connector.

Audipack's general conditions of sales and delivery apply to all of Audipack's deliveries. These conditions can be downloaded from Audipack's website, www.audipack.com, or will be sent by post on request.

Audipack liefert ausschließlich unter die allgemeine Verkauf- und Lieferungsbedingungen von Audipack. Diese Bedingungen sind zum downloaden verfügbar auf die Webseite von Audipack, www.audipack.com, oder werden Ihnen auf Anfrage per Post gesendet.

Alle leveringen geschieden uitsluitend volgens de Algemene Verkoop- en Leveringsvoorwaarden van Audipack. Een afschrift hiervan kunt u downloaden van de website van Audipack, www.audipack.com, of wordt u op aanvraag gestuurd per post.

Les conditions de vente et de livraison de Audipack s'appliquent à tous les livraisons de Audipack. Cette conditions sont disponible sur le site internet de Audipack, www.audipack.com, où seront envoyé par poste sur demande.

AUDIPACK

Industriestraat 2-4
2751 GT Moerkapelle
the Netherlands

Tel: +31(0)795931671
Fax: +31(0)795933115
Email: audipack@audipack.com

www.audipack.com

Audipack reserves the right to make changes in specifications and other information contained in this document without prior written notice. The information provided herein is subject to change without notice. In no event shall Audipack be liable for any incidental, special, indirect, or consequential damages whatsoever, including but not limited to lost profits, arising out of or related to this manual or the information contained herein, even if Audipack has been advised of, known, or should have known, the possibility of such damages.