

Projector Liftomatic

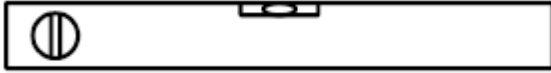


Audipack[®]

It's great to have solutions...

1.
The Liftomatic is only designed to lift up projectors, the system is not applicable for personal transport or general lifting purposes. See the attached table on the product for the maximum lifting capacity.

2.
Use the Liftomatic only on level surfaces and always apply the brakes of the System.



1.
Take off the lid of the flightcase and position the projector on top of the platform. Max. load of the projector is mentioned on the Liftomatic serial number plate.

2.
Apply the power cord and press UP to lift the projector. The tilt switch is for activating the tilt mechanism of the platform. Level the platform before ascending.



3. (Hydraulic systems only)

When the projector is on desired height, lock the system by closing the tap. The tap secures the position when installed for a long duration on the same height.



4. (HE-3000 only)

When the system is used above 2000 mm, apply the stability feet.

Open the hatches on the side of the flightcase and lock them into position.

Take out the feet from the inside of the flightcase and locate them on the stability arms.



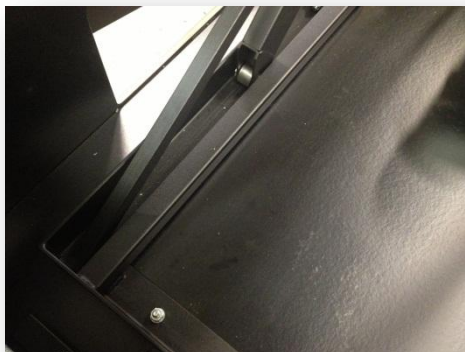
5. (HE-3000 only)

When the lift is in upper position it might be possible that a drop of oil is visible at the air intake of the cylinder; this is no problem.



6. (HE-3000 only)

When the lift needs a check up or maintenance, please use the safety arms and fold them down to secure the platform from descending when working on the lift.



7.
When an objects get's caught between the platform and flightcase the Anti-pinching device is activated.
This will stop the system from decending.

Remove the object and RESET the pinching device on the control board.



7. T-1900 only

The T-1900 system is not an hydraulic lift system but a system with 2 electric motors. For activating the system push the "lift" button.
Importand to know is when descending the lift to the lowest position, the platform is level, and the button must be activated untill the system stops by itself.

FAQ:

When the T-1900 lift stops working and makes a beeping sound it means there is a communication error in the controll. Please contact service@audipak.com for more information.

When the hydraulic lift slowly descends without using the tap, it means the system needs to be cleaned and services. Please contact service@audipak.com for more information.

Audipack's general conditions of sales and delivery apply to all of Audipack's deliveries. These conditions can be downloaded from Audipack's website, www.audipack.com, or will be sent by post on request.

Audipack liefert ausschließlich unter die allgemeine Verkauf- und Lieferungsbedingungen von Audipack. Diese Bedingungen sind zum downloaden verfügbar auf die Webseite von Audipack, www.audipack.com, oder werden Ihnen auf Anfrage per Post gesendet.

Alle leveringen geschieden uitsluitend volgens de Algemene Verkoop- en Leveringsvoorwaarden van Audipack. Een afschrift hiervan kunt u downloaden van de website van Audipack, www.audipack.com, of wordt u op aanvraag gestuurd per post.

Les conditions de vente et de livraison de Audipack s'appliquent à tous les livraisons de Audipack. Cette conditions sont disponible sur le site internet de Audipack, www.audipack.com, où seront envoyé par poste sur demande.

AUDIPACK

Industriestraat 2-4
2751 GT Moerkapelle
the Netherlands

Tel: +31(0)795931671
Fax: +31(0)795933115
Email: audipack@audipack.com

www.audipack.com

Audipack reserves the right to make changes in specifications and other information contained in this document without prior written notice. The information provided herein is subject to change without notice. In no event shall Audipack be liable for any incidental, special, indirect, or consequential damages whatsoever, including but not limited to lost profits, arising out of or related to this manual or the information contained herein, even if Audipack has been advised of, known, or should have known, the possibility of such damages.